

# HO'ŌKELE

"Navigator"



FOR THE NAVY AND AIR FORCE TEAM IN HAWAII

JULY 2022



# WELCOME RIMPAC PARTICIPANTS

## Your Navy Team in Hawaii

Commander, Navy Region Hawaii oversees two installations: Joint Base Pearl Harbor-Hickam on Oahu and Pacific Missile Range Facility, Barking Sands, on Kauai. We provide oversight for the ten surface ships homeported at JBPHH. Navy aircraft squadrons are also co-located at Marine Corps Base Hawaii, Kaneohe, Oahu, and training is sometimes also conducted on other islands, but most Navy assets are located at JBPHH and PMRF. These two installations serve fleet, fighter and family under the direction of Commander, Navy Installations Command.

The guided-missile cruiser and destroyers of Commander, Naval Surface Force Pacific deploy independently or as part of a group for Commander, U.S. Third Fleet and in the Seventh Fleet and Fifth Fleet areas of responsibility. The Navy, including your Navy team in Hawaii, builds partnerships and strengthens interoperability in the Pacific. Each year, Navy ships, submarines and aircraft from Hawaii participate in various training exercises with allies and friends in the Pacific and Indian Oceans to strengthen interoperability. Navy service members and civilians conduct humanitarian assistance and disaster response missions in the South Pacific and in Asia. Working with the U.S. Coast Guard, the Navy in Hawaii provides drug interdiction and fisheries enforcement operations for Commander, U.S. Pacific Fleet. In even-numbered years, Hawaii hosts the biennial summer Rim of the Pacific Exercise, the world's largest military maritime exercise, featuring more than two dozen nations and 25,000 personnel.

The Navy family in Hawaii comprises around 50,000 people, most of whom are active duty service members and their families, and includes nearly 15,000 civilians and contractors as part of our workforce.

JBPHH includes the Pearl Harbor waterfront, Hickam flight line, Wahiawa annex and several other areas in West Oahu and provides a major logistics and other support hub for the military and military families. Supporting the nation's ballistic missile defense initiative, the Pacific Missile Range Facility on the western coast of "The Garden Island," is the world's largest instrumented multidimensional testing and training missile range.

We provide services to the U.S. Pacific Command, one of DOD's six geographic combatant commands, with an area of responsibility covering half the globe. We directly support two component commands whose headquarters are on JBPHH: Commander, U.S. Pacific Fleet and Commander, U.S. Pacific Air Force. Close to our own Region/MIDPAC headquarters command is Commander, Submarine Force, U.S. Pacific Fleet. With 18 forward-deployable combat-ready U.S. Navy submarines, Pearl Harbor is home to the largest submarine presence in the Pacific. The Pearl Harbor Naval Shipyard, on JBPHH, is the largest ship repair facility between the West Coast and the Far East. Within our region, we support more than 100 tenant commands.

## CONTENTS

04-13

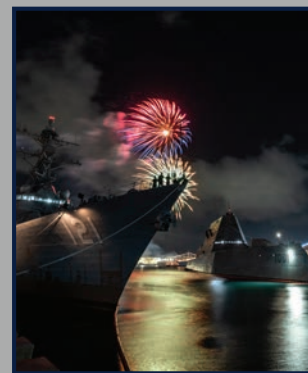
- 2022 RIMPAC EXERCISE**
- RIMPAC Begins
  - Welcome RIMPAC Participants
  - RIMPAC Event Photo Highlights
  - RIMPAC Sports Photo Highlights
  - RIMPAC NEX shuttle bus schedule

14-15

**MWR CALENDAR OF EVENTS**

16

**PREPARING A KIT FOR HURRICANE SEASON**



**ON THE COVER:**

Arleigh Burke-class guided missile destroyer USS Frank E. Petersen Jr. (DDG 121) and Zumwalt-class destroyer USS Michael Monsoor (DDG 1001) sit pierside as a 4th of July fireworks display illuminates the night sky over Joint Base Pearl Harbor-Hickam during Rim of the Pacific (RIMPAC) 2022.

(Photo by MC1 Devin M. Langer)



**More RIMPAC coverage to follow in the August edition of Ho'okele.**

The Ho'okele magazine is available online:

- CNRH website: <https://cnrh.cnic.navy.mil/>
- CNRH DVIDS: <https://www.dvidshub.net/publication/841/hookele>
- CNRH ISSUU: <https://issuu.com/navyregionhawaii>

Find RIMPAC coverage on DVIDS: <https://www.dvidshub.net/feature/RIMPAC2022>

connect with us



@NavRegHawaii  
@JointBasePHH



@NavyRegionHawaii  
@JBPHH  
@PacificMissileRangeFacility



@JBPHH



Commander  
Navy Region Hawaii

REAR ADM. STEPHEN BARNETT



Commander  
Joint Base Pearl Harbor-Hickam

CAPT. MARK SOHANEY



Commanding Officer  
Pacific Missile Range Facility

CAPT. BRETT STEVENSON



## Abraham Lincoln arrives at Pearl Harbor

Sailors man the rails as the Nimitz-class aircraft carrier USS Abraham Lincoln (CVN 72) pulls into Joint Base Pearl Harbor-Hickam during Rim of the Pacific (RIMPAC) 2022. Twenty-six nations, 38 ships, four submarines, more than 170 aircraft and 25,000 personnel are participating in RIMPAC from June 29 to Aug. 4 in and around the Hawaiian Islands and Southern California. (Photo by MC3 Cassandra Alanis)



Director of Public Affairs, Navy Region Hawaii  
Lydia Robertson

Deputy Director of Public Affairs,  
Navy Region Hawaii  
Mike Andrews

Director of Public Affairs,  
Joint Base Pearl Harbor-Hickam  
Chuck Anthony

Director of Public Affairs,  
Pacific Missile Range Facility  
Tom Clements

Editor  
Anna Marie General

Production Team  
Melvin J. Gonzalvo  
Elaine Phillips  
David D. Underwood, Jr.  
MC2 Gregory Hall  
Staff Sgt. Jacob Thompson



Ho'okele is a free publication. All editorial content is prepared, edited, provided and approved by the staff of the Commander, Navy Region Hawaii Public Affairs Office: 850 Ticonderoga, Suite 110, JBPHH, Hawaii, 96860-4884. Telephone: (808) 473-2888; fax (808) 473-2876. This is an authorized publication primarily for members of the uniformed military services and their families in Hawaii. Its contents do not necessarily reflect the official views of the U.S. government, the Department of Defense, and the military branch of services and do not imply endorsement thereof. A Hui Hou!

## Diverse VIEWS

"What is your favorite 4th of July festivity and why?"

Interview by David D. Underwood, Jr.



Cmdr. Karlie Blake  
Fleet Logistics Center Pearl Harbor

"I love watching fireworks with family and friends. July 4th has always been my favorite holiday."



Lt. Col. Andrew Garcia  
15th Maintenance Group

"Spending time with family. I have spent the 4th of July all over the world and often away from family. Getting to enjoy it at home just makes celebrating our freedom that much more special."



Sean Omatsu  
NAVFAC Pacific

"Barbecues and spending time with the family. It's a chance to reflect on the good things we have."



# RIMPAC BEGINS

U.S. 3rd Fleet Public Affairs



The U.S. Navy launched the 28th edition of the biennial Rim of the Pacific (RIMPAC), the world's largest international maritime exercise.

Twenty-six nations, 38 surface ships, four submarines, nine national land forces, more than 30 unmanned systems, approximately 170 aircraft and more than 25,000 personnel will train and operate in and around the Hawaiian Islands and Southern California, June 29 to Aug. 4.

Following RIMPAC's theme of Capable Adaptive Partners, RIMPAC forces will exercise a wide range of capabilities, projecting the inherent flexibility of maritime forces and helping to promote a free and open Indo-Pacific.

RIMPAC 2022 commander, Vice Adm. Michael Boyle, welcomed participants during a kick-off gathering of leaders from across the RIMPAC force.

"By coming together as Capable, Adaptive Partners, and in the scale that we are, we are making a statement about our commitment to work together, to foster and

sustain those relationships that are critical to ensuring the safety of the sea lanes and the security of the world's interconnected oceans," said Boyle. "This is also how we find the areas where our national objectives overlap, where we can practice the procedures that will help to enable our interchangeability –the nexus of national will and interoperability."

Royal Canadian Navy Rear Adm. Christopher Robinson will serve as deputy commander of the CTF, Japan Maritime Self-Defense Force Rear Adm. Toshiyuki Hirata as the vice commander, and Fleet Marine Force will be led by U.S. Marine Corps Brig. Gen. Joseph Clearfield. Other key leaders of the multinational force will include Commodore Paul O'Grady of the Royal Australian Navy, who will command the maritime component, and Brig. Gen. Mark Goulden of the Royal Canadian Air Force, who will command the air component.

For the first time, the Republic of Korea Rear Adm. Sangmin An will serve as the commander of Combined Task Force (CTF) 176, RIMPAC's amphibious task force. Republic of Singapore Navy Col. Kwan Hon Chuong will serve as the Sea Combat commander for CTF 176, and Royal Australian Navy Capt. Michael Osborn CSM will serve as the Sea Logistics commander, CTF 173.

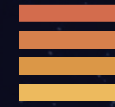
This marks the first time the newly commissioned Royal Australian Navy Supply Class Auxiliary Oiler Replenishment ship HMAS Supply will participate in an international exercise, carrying-out replenishments at sea with participating navies.

This year's exercise program will include gunnery, missile, anti-submarine and air defense exercises, as well as amphibious, counter-piracy, mine clearance, explosive ordnance disposal, diving and salvage operations. Additionally, the exercise will also introduce space and cyber operations for all partner nations.

"It's great to see the exercise return to the scale that we have seen in previous years, enabling the combined forces of our 26 partner and allied nations to work together and learn from each other," said RIMPAC CTF deputy commander Rear Adm. Christopher Robinson of the Royal Canadian Navy.

"We are each maritime nations and we rely on each other to help keep our sea lanes free and open.

"RIMPAC provides us with the opportunity to grow and refine our individual and combined abilities, and our joint capacity to contribute to security in the Indo-Pacific region. This helps us all."





# Aloha and Welcome RIMPAC PARTICIPANTS



Twenty-six nations, 38 surface ships, four submarines, nine national land forces, more than 170 aircraft and approximately 25,000 personnel are participating in the biennial Rim of the Pacific (RIMPAC) exercise scheduled June 29 to Aug. 4, in and around the Hawaiian Islands and Southern California. RIMPAC 2022 is the 28th exercise in the series that began in 1971.

As the world's largest international maritime exercise, RIMPAC provides a unique training opportunity designed to foster and sustain cooperative relationships that are critical to ensuring the safety of sea lanes and security on the world's interconnected oceans.

The theme of RIMPAC 2022 is "Capable, Adaptive, Partners." Participating nations and forces will exercise a wide range of capabilities and demonstrate the inherent flexibility of maritime forces. These capabilities range from disaster relief and maritime security operations to sea control and complex warfighting. The relevant, realistic training program includes amphibious operations, gunnery, missile, anti-submarine and air defense exercises, as well as counter-piracy operations, mine clearance operations, explosive ordnance disposal, and diving and salvage operations.

This year's exercise includes forces from Australia, Brunei, Canada, Chile, Colombia, Denmark, Ecuador, France, Germany, India, Indonesia, Israel, Japan, Malaysia, Mexico, Netherlands, New Zealand, Peru, the Republic of Korea, the Republic of the Philippines, Singapore, Sri Lanka, Thailand, Tonga, the United Kingdom, and the United States.

To learn more about RIMPAC, visit <https://www.dvidshub.net/feature/RIMPAC2022>

## Hawaiian terms to know

WAHINE.....	Woman
KANE.....	Man
KEIKI.....	Child
ALOHA.....	Hello, goodbye
MAHALO.....	Thank you
MAHALO NUI LOA.....	Thank you very much
E KOMO MAI.....	Welcome
KOKUA.....	Be courteous
KAMA'AINA.....	Hawaii resident
MAKAI.....	To the sea
MAUKA.....	To the mountains
HANA HOU.....	One more time
OHANA.....	Family
A HUI HOU KAKOU.....	Until we meet again
PAU HANA.....	Quitting time
WIKIWIKI.....	Fast
AKAMAI.....	Smart

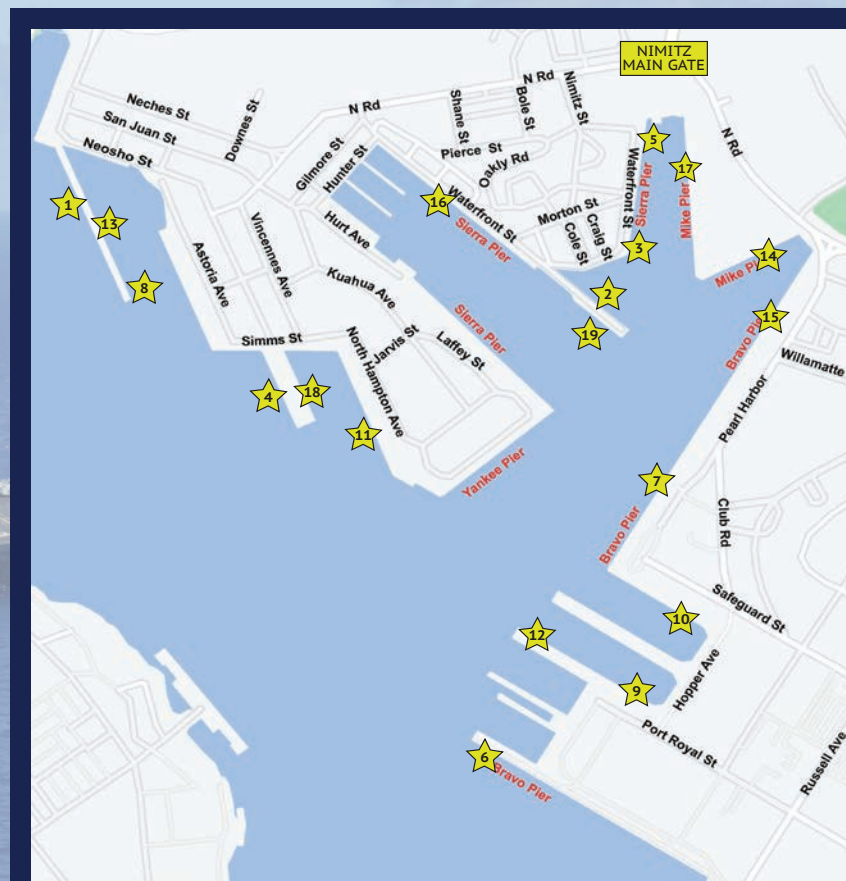
## Stay safe, protect the environment

Many Hawaii residents endorse the concept of "aloha aina" — love of the land, which is marked by stewardship and reverence for the environment, attributing spiritual power to the many features of the earth as well as its wildlife. That environment can also bite back and cause unwanted injuries.

Here are some tips to enjoy Hawaii's environment and stay safe at the same time:

- Watch out for Hawaiian monk seals and sea turtles on the beach. Both are endangered species and by law have the right of way and must be left alone. Do not touch them and stay at least 10 feet away.
- While snorkeling or diving, avoid stepping on corals or striking them with fins or feet. Coral is a living organism, and can die if trod upon.
- When hiking, stay on the trail. Most accidents happen when hikers leave the established trail and disregard warning signs. Staying on the trail greatly reduces your chances of having a serious fall or getting lost.
- Be aware of surf conditions before heading out to the water. Always face the ocean and stay a distance away from wave dampened rock surfaces

For more safety tips, visit <https://jbphh.greatlifehawaii.com/safety>



## RIMPAC 2022 OPEN SHIP DAY

1. USS Abraham Lincoln (CVN 72) (USA)
2. CNS Almirante Lynch (FF 07) (Chile)
3. BRP Antonio Luna (FF-151) (Philippines)
4. HMNZS Aotearoa (A 11) (New Zealand)
5. ARM Benito Juarez (F-101) (Mexico)
6. HMAS Canberra (L02) (Australia)
7. USS Chafee (DDG 90) (U.S.A)
8. BAP Guise (CC-28) (Peru)
9. KRI I Gusti Ngurah Rai (332) (Indonesia)
10. RSS Intrepid (69) (Singapore)
11. KD Lekir (F-26) (Malaysia)
13. ROKS Marado (LPH 6112) (Republic of Korea)
14. USS Michael Monsoor (DDG 1001) (USA)
15. USS Mobile Bay (CG 53) (USA)
16. FS Prairial (F731) (France)
17. INS Satpura (F 48) (India)
18. ARM Usmacinta (A-412) (Mexico)
19. HMCS Winnipeg (FFH 338) (Canada)

★ STAR INDICATES SHIPS LOCATION

## RIMPAC opens ship tours for DoD ID card holders

### Joint Base Pearl Harbor-Hickam Public Affairs

Participating RIMPAC ships invites U.S. Department of Defense (DoD) ID card holders to an open ship day on Saturday, July 9 from 8 a.m. to 4 p.m. onboard Joint Base Pearl Harbor-Hickam (JBPHH).

The following Navy ships will be participating in this year's Rim of the Pacific Open Ship Day:

- USS Abraham Lincoln (CVN 72) (USA)
- CNS Almirante Lynch (FF 07) (Chile)
- BRP Antonio Luna (FF-151) (Philippines)
- HMNZS Aotearoa (A 11) (New Zealand)
- ARM Benito Juarez (F-101) (Mexico)
- HMAS Canberra (L02) (Australia)
- USS Chafee (DDG 90) (USA)
- BAP Guise (CC-28) (Peru)
- KRI I Gusti Ngurah Rai (332) (Indonesia)
- RSS Intrepid (69) (Singapore)
- KD Lekir (F-26) (Malaysia)
- ROKS Marado (LPH 6112) (Republic of Korea)
- USS Michael Monsoor (DDG 1001) (USA)
- USS Mobile Bay (CG 53) (USA)

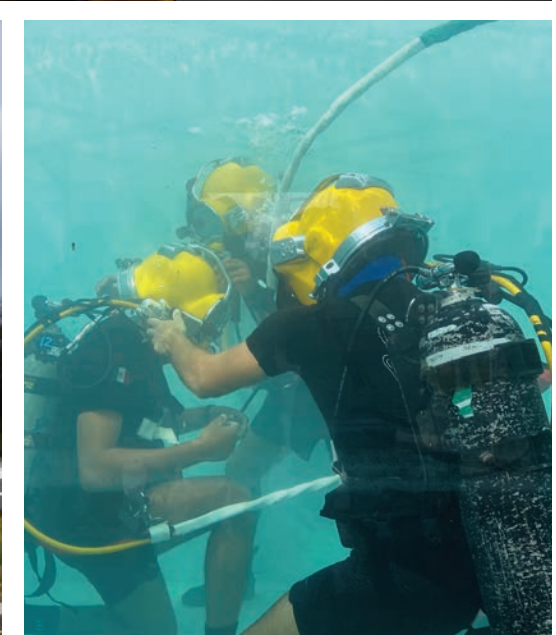
- FS Prairial (F 731) (France)
- INS Satpura (F 48) (India)
- ARM Usumacinta (A-412) (Mexico)
- HMCS Winnipeg (FFH 338) (Canada)

Only RIMPAC participants and those with a DoD identification card will be permitted onboard JBPHH. The minimum age for children is five years old, strollers are strongly discouraged aboard the ships due to safety concerns. Personnel with base access may sponsor civilian guests through the JBPHH Trusted Traveler program. Visit <https://go.usa.gov/xSxCY> for more information about the program.

Individuals interested in visiting any U.S. and/or partner nation ships should bring face masks and proof of COVID immunization as well as be prepared to respect the various COVID mitigations in place for their respective ships. The RIMPAC medical team strongly recommends non-immunized visitors wear a mask while aboard ships. Availability of Navy ship tours is subject to change at the discretion of the ship's commanding officer.



# EVENT HIGHLIGHTS



(Photos courtesy of RIMPAC CIB and 3rd Fleet Public Affairs)



# SPORTS HIGHLIGHTS



(Photos courtesy of RIMPAC CIB and 3rd Fleet Public Affairs)

★ RIMPAC COMPLIMENTARY SHUTTLE BUS SCHEDULE ★

**THE MALL AT PEARL HARBOR AND FOOD COURT**

**SERVICES**

Auto Detailing  
Barber Shop  
Beauty Salon & Spa  
Flower Shop

JANZ Medical Supplies  
Jewelry/ Watch Repair  
Laundry/Dry Cleaning  
MWR ITT

Mobile Center  
Optical Shop  
Package Store  
Spectrum  
UPS Mailing Center

**FLEET STORE AND FOOD COURT**

**SERVICES**

Embroidery/Tailor Shop  
Grab & Go Flowers/  
Laundry/ Dry Cleaning  
MWR ITT



**PHASE I: JUNE 29 - JULY 10, 2022**  
DAILY FROM 1000-2100 (Last Bus leaves Mall at 2100)

JULY 11 - AUG 1: Regular Schedule MON-FRI • FROM 1100-1600

**PHASE II: AUGUST 2-4, 2022**  
DAILY FROM 1000-2000 (Last Bus leaves Mall at 2000)

■■■■ BRAVO PIER EXPRESS ■■■■ A HOTEL PIER ● KILO PIER EXPRESS

**NEX Shuttle Bus Route Schedule**

- 1 The Mall at Pearl Harbor
- 2 Radford Drive/Kamehameha HWY. "TheBus" Stop  
Approx: 03 past the hour
- 3 Mathies Hall\*  
Approx: 10 past the hour
- 4 AMC Terminal\*  
Approx: 15 past the hour
- 5 Fox Boulevard\*  
Approx: 23 past the hour
- 6 Penalty Box  
Approx: 30 past the hour
- 7 Bravo Pier/NEX Fleet Store (Uniforms)/ATM/  
Barber Shop/Food Court/MWR ITT  
Approx: 35 past the hour
- 8 Chapel/McDonald's  
Approx: 37 past the hour
- 9 JBPHH Fitness Center/Laundromat/  
Kona Winds Complex  
Approx: 38 past the hour
- 10 Oklahoma Hall BQ  
Approx: 40 past the hour
- 11 Lockwood Hall/Submarine Training Facility  
Approx: 42 past the hour
- 12 NEX Holomoku Mini Mart/ATM/Barber Shop  
Subway/Drive Thru Coffee/"TheBus" Stop  
Approx: 44 past the hour
- 13 Radford Drive "TheBus" Stop  
Approx: 46 past the hour
- 14 Aloha Navy Center/Moanalua Navy Services  
Approx: 55 past the hour

\*Shuttle bus schedule is subject to change



Shuttle bus departs from The Mall at Pearl Harbor every hour on the hour.

The NEX Shuttle Bus is a complimentary service provided by Navy Exchange Hawaii. If you have questions or comments about our service, please call The Mall at Pearl Harbor at (808)423-3330 . RIMPAC REV 6/17/22

# RIMPAC

2022

26 NATIONS

30+ UNMANNED SYSTEMS

4 SUBMARINES

38 SURFACE SHIPS

25K PERSONNEL

170+ AIRCRAFT

CAPABLE, ADAPTIVE, PARTNERS



Visit <https://jbphh.greatlifehawaii.com/summer> to see all the fun events MWR has lined up for you and your family this season. Here's a reminder of more fun things to do, in case you forgot the variety MWR offers you.

JULY 2022

**July 1-29** **Start Smart T-ball Registration.** Register your child for this parent & child introduction to T-ball. Season runs Aug 26-Sep 30. Call 808-473-0789 for more info.



**JULY 2** **FAMILY DOG SHOW**  
Sponsored by USAA

10:30a.m.-12p.m. at Hickam Arts & Crafts Center. FREE to participate. Call 808-448-2392 for more information.



# #greatlifehawaii

A quick guide to what's going on with MWR, CYP and MFSC.

**July 2 & 3** **Great Navy Campout** at Hickam Harbor. \$35 per campsite. Reservations are first come, first served. Call 808-449-5212.



**JULY 4** **4TH OF JULY FREEDOM FEST**  
Sponsored by USAA

Beginning at 3p.m. Catch the AFE Heatwave with four big concerts. Tons of giveaways, FREE activities, delicious food and drink available for purchase and the best fireworks show on the island.



**July 16** **Red, White & Blue 10K Run.** 7a.m. at Hickam Fitness Center. Dress up in our nation's colors and use this run as a warm up for our half marathon in August. FREE to participate, sign up the morning of the run. Call 808-448-2214 for more info.

**JULY 23 to Oct. 29** **SUMMER SOCCER LEAGUE**

Open to all DoD ID cardholders, \$400 per team, sign up beginning July 7. Call 808-473-1921 or 808-473-2494 for more info.



More to see on the other side! ▶

## PHOTO OF THE MONTH

**JBPHH Sunsets**  
Sunsets can be beautiful anywhere you are in the world. Here's a scene from Friday Pau Hana on the rooftop of Wright Brothers. Join us every Friday and welcome the weekend.



# #greatlifehawaii

A quick guide to what's going on with MWR, CYP and MFSC.

Scan our QR codes!



**Arts & Crafts Center**  
See the full calendar of classes.

**Liberty Program**

See this month's Liberty activities calendar.



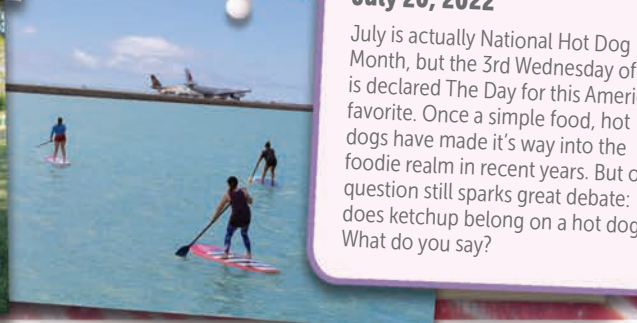
**Outdoor Recreation**  
See the classes and excursions we have planned on the horizon!

**Makai Recreation Center**

See our full list of classes here.



**Military & Family Support Center**  
See our full list of classes here.



THIS MONTH'S EXTRA:



**NATIONAL HOT DOG DAY - July 20, 2022**

July is actually National Hot Dog Month, but the 3rd Wednesday of July is declared The Day for this American favorite. Once a simple food, hot dogs have made it's way into the foodie realm in recent years. But one question still sparks great debate: does ketchup belong on a hot dog? What do you say?

### Arts & Crafts

**Monthly Craft Fair**

July 16 | 9a.m.-2p.m.

Every third Saturday at the Hickam Arts & Crafts Center. Shop handmade products and find something special!

### Everything Food & Drink

**Friday Rooftop Pau Hana at Wright Brothers Cafe & Grille**

Fridays, 4-8p.m.

Enjoy drinks and a limited pau hana menu while watching the sun set at our open-air rooftop lounge.

**DJ Bingo at Tradewinds**

Saturdays, 7p.m.

Test your song knowledge & win prizes!

**DJ Trivia at Tradewinds**

Tuesdays, 7p.m.

Think you know it all? Prove it at Trivia night!

### Liberty Programs

**Barracks Bash is Back!**

Every month Liberty travels to one of the Unaccompanied Housing sites and sets up to serve our single sailors and airmen some "grindz". This month Liberty is scheduled to stop at Oklahoma Hall on July 21 at 5p.m. Events are subject to change so be sure to check with Liberty.

### Outdoor Recreation

**Learn Stand Up Paddle Boarding**

July 23 & 31 (9-10a.m. and 10:30-11:30a.m.) \$30/session

Get your feet wet and discover stand up paddle boarding. Learn the basics in a stress free environment. Paddle boarding is a great way to work out and enjoy the ocean. Sign up and experience something new!

**Moonlight Paddle at Hickam Harbor**

July 13 (8-10p.m.) | \$40/session

Melt the day to day stress with an evening paddle. As the moon lights our way across the water, enjoy the company of the group, the stillness of the water and let our guides lead the way. All gear included. Paddling experience required; some physical exertion

### Outdoor Recreation (continued)

necessary. Bring water and dry clothes to change into after the activity. \*\*Subject to change due weather and ocean conditions. Safety is our biggest priority!

### Makai Recreation Center

**Brazilian Jiu-Jitsu**

Tuesdays & Thursdays (Youth) | 5:30p.m.  
Tuesdays & Thursdays (Adult) | 6:30p.m.

Learn a complete grappling system using clinches, takedowns, ground transitions and submissions for competition or self defense. To register email: vma.vmahi@gmail.com.

### MFSC

Halfway through the year, a good time to recommit to something new! Classes available in financial planning, personal development, relocation, transition & employment. To register or check out the available class listings at [jbphh.greatlifehawaii.com/support/military-family-support-center/mfsc-class-schedule-registration](https://jbphh.greatlifehawaii.com/support/military-family-support-center/mfsc-class-schedule-registration).



STAY CONNECTED AND FOLLOW US ONLINE!

@GreatLifeHawaii | GreatLifeHawaii.com





# EMERGENCY PREPAREDNESS STARTS WITH YOU



[dod.hawaii.gov/hiema](http://dod.hawaii.gov/hiema)

## ARE YOU 2 WEEKS READY?

### BUILD KITS

Have smaller kits for work, for every family member, and pets. Have a vehicle safety kit too.



## PLAN TO BE ON YOUR OWN FOR AT LEAST 2 WEEKS

- Water (1 gal. per person/day)
- Food (Non-perishable)
- First Aid Kit
- Face Masks/Sanitizer
- Medications
- NOAA Alert Radio Extra
- Batteries

- Flashlight
- Can Opener
- Tools
- Warm Clothes
- Sturdy Shoes
- Personal Hygiene Items
- Toilet Paper

- Pet Supplies
- Fire Extinguisher
- Glasses/Eye Care
- Cash
- Identification
- Important Documents
- Comfort/Entertainment